

# SuperOffice Online Certificates

## 1 CONTENTS

---

Assumptions.....	1
Prerequisites .....	1
1.1 Overview .....	1
1.2 Install Certificates .....	1
1.3 Environments .....	5

## ASSUMPTIONS

---

This introduction assumes that you understand what SuperOffice CRM Online is, and that you have a working knowledge of Security and Certificates.

### PREREQUISITES


- Knowledge with managing Certificates in Windows.


### 1.1 OVERVIEW


This document outlines the steps necessary to install SOD certificates on your servers that work in the SuperOffice Online Development (SOD) environment. SOD is a sandbox environment that mirrors what exists in the SuperOffice Online production environment, but is different in that it does not share any data at all with, and is isolated from, the stage and production environment. SOD, stage and production contain different set of customers and require different set of credentials, and different sets of certificates.

### 1.2 INSTALL CERTIFICATES

Included in the example are three required public key certificates for SOD.

 SuperOfficeDevelopment.crt

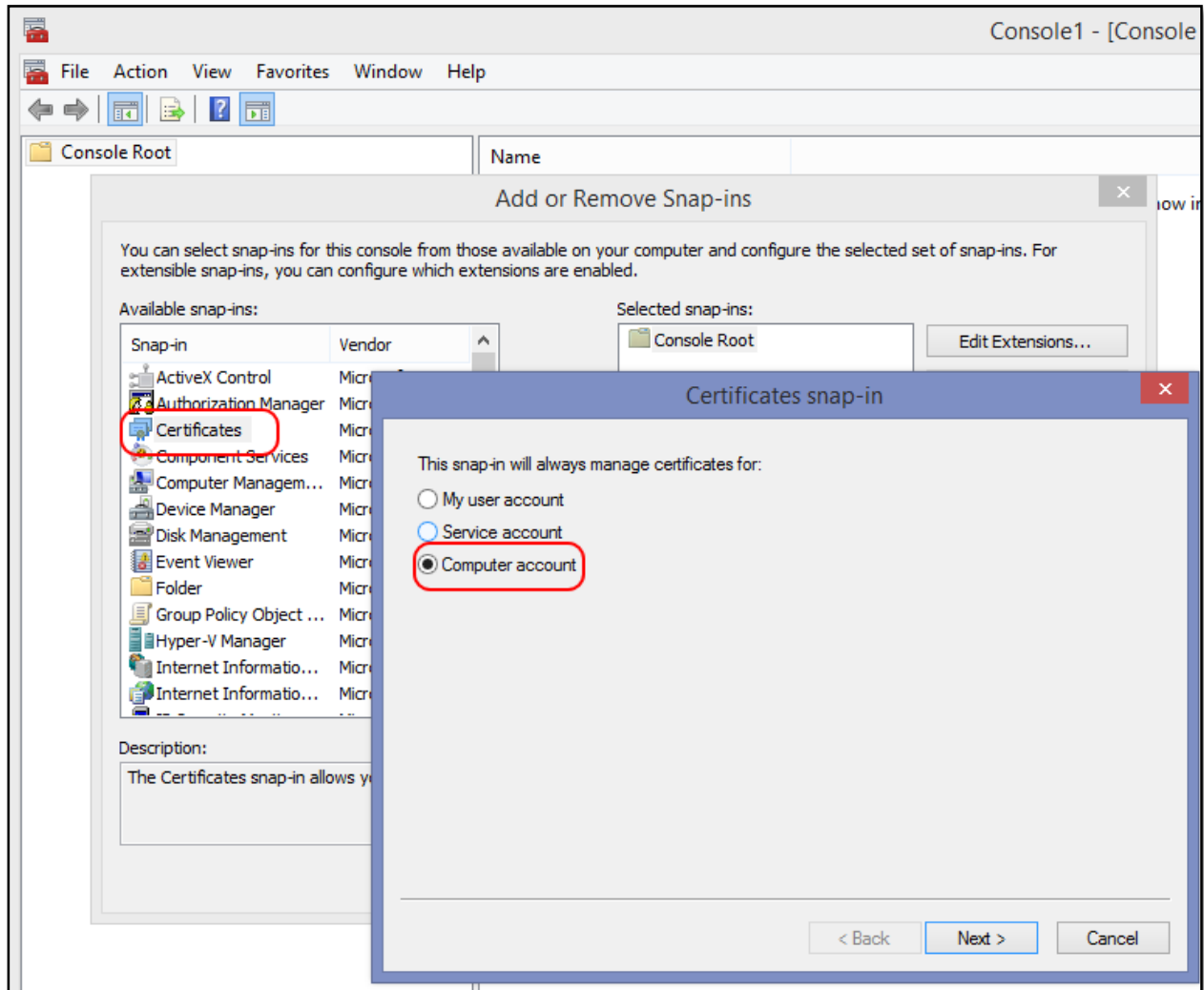
 SuperOfficeFederatedLogin.crt

 SuperOfficeOnline.crt

Certificates are required to validate the response from sending a system user token to SuperId in exchange for a system user ticket.

Open Microsoft Management Console (mmc.exe). Under File menu click Add/Remove Snap-In. In the Add or Remove Snap-ins dialog, select the Certificates option, then click the Add button in the middle of

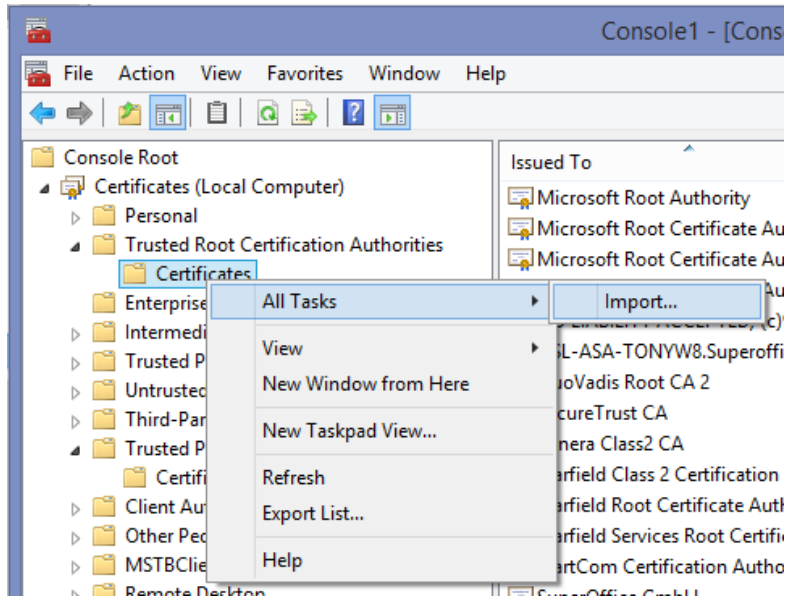
the two list boxes. In the Certificates snap-in dialog, select the last option Computer account, then click next to continue.



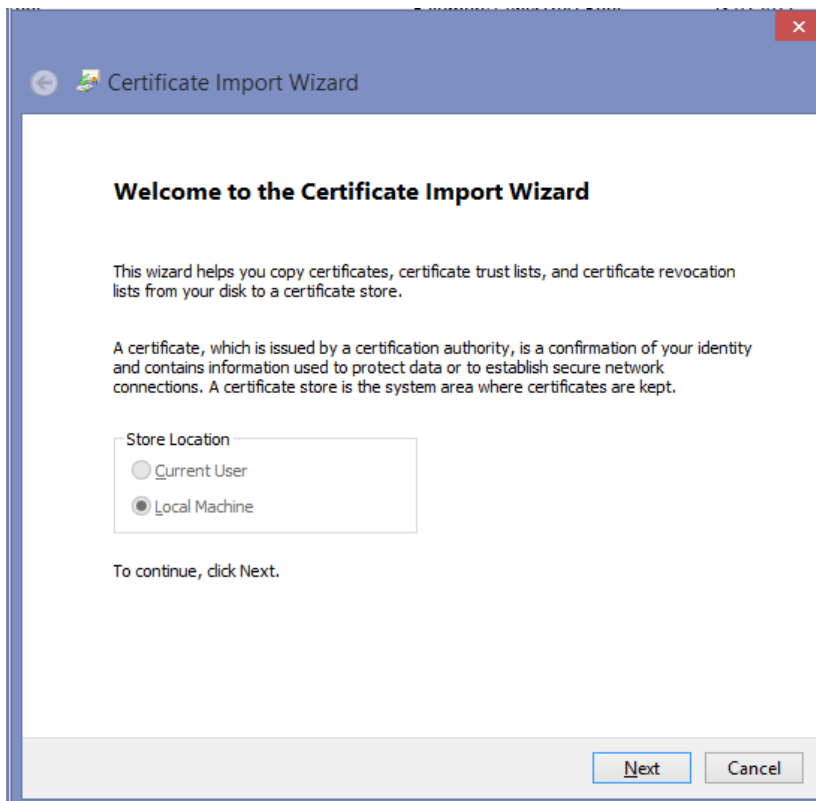
In the next dialog, accept the default Local Machine option, click Finish, and then click OK to close the Add or Remove Snap-ins dialog.

The certificates **SuperOfficeDevelopment.crt** and **SuperOfficeOnline.crt** must be installed in the **Trusted Root Certification Authorities\Certificates** folder.

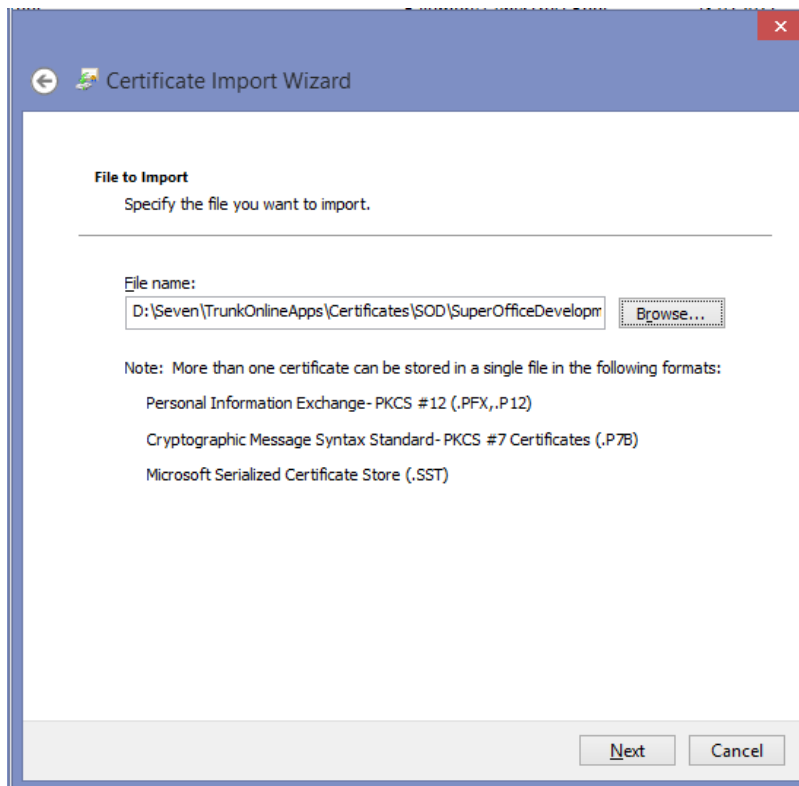
The **SuperOfficeFederatedLogin.crt** file must be installed in the **Trusted People\Certificates** folder. To install the certificates right-click the Certificates folder, click All Tasks and then click Import.



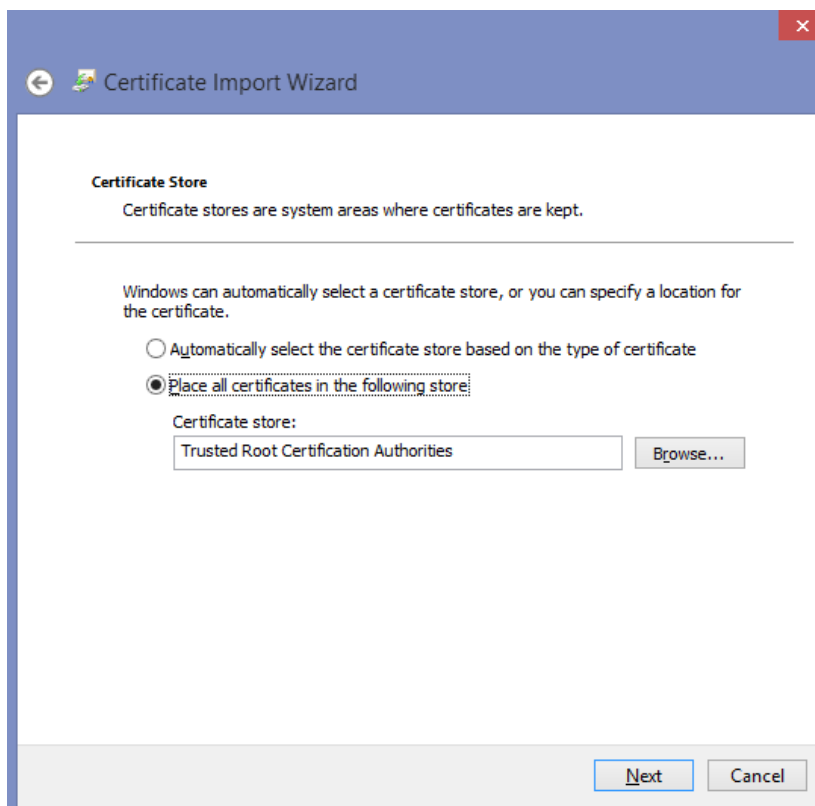
The Certificate Import Wizard dialog appears. Accept the default Local Machine setting and click Next to continue.



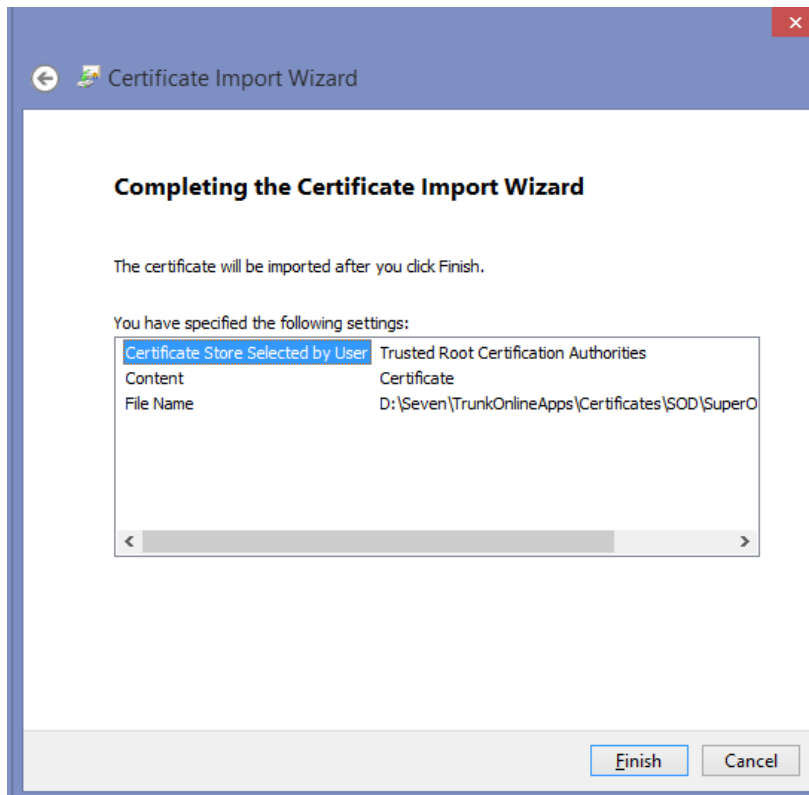
Select the SuperOfficeDevelopment.crt file and click next to continue.



In the Certificate Store screen, accept the default settings and click Next.



Next screen is the Completing the Certificate Import Wizard summary page. Click Finish to complete the certificate import operation.



A final Import Successful dialog will appear.

Complete the same import operation for the SuperOfficeOnline.crt file.

Do keep in mind what was stated before:

The certificates **SuperOfficeDevelopment.crt** and **SuperOfficeOnline.crt** must be installed in the **Trusted Root Certification Authorities\Certificates** folder.

The **SuperOfficeFederatedLogin.crt** file must be installed in the **Trusted People\Certificates** folder.

### 1.3 ENVIRONMENTS

There are different sets of certificates for SOD, Stage and Production.

Questions can be submitted to: [sdk@superoffice.com](mailto:sdk@superoffice.com)